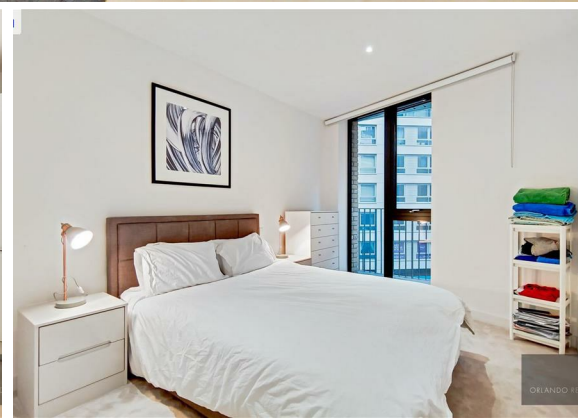
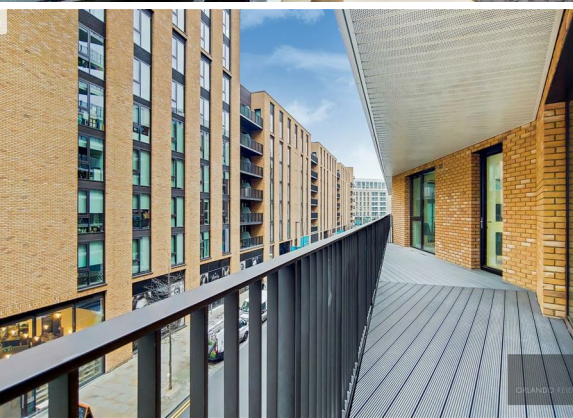




## 2 Bed Apartment located in Royal Wharf

£2,750 PCM

ORLANDO REID



ORLANDO REID

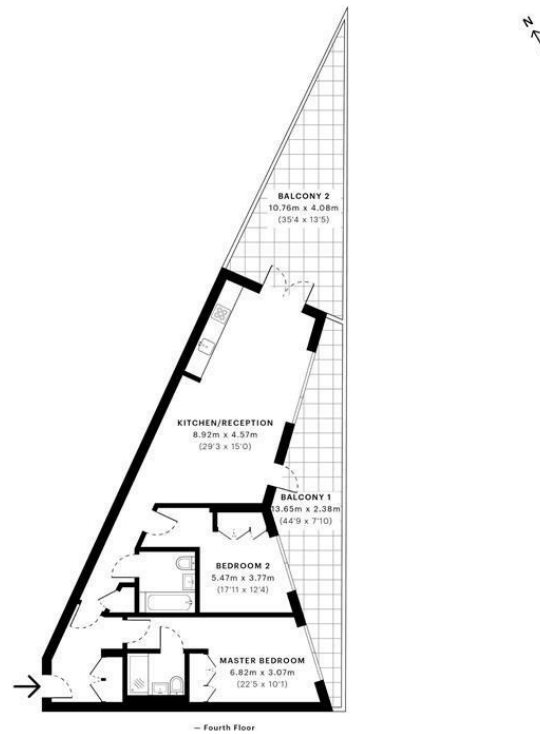


## Mercier Court, E16

CAPTURE DATE:  
30/09/2019

LASER SCAN POINTS:  
46,737,378

GROSS INTERNAL AREA  
84.0 Sqm / 904.3 Sqft



GROSS INTERNAL AREA  
The footprint of the property  
84.0 Sqm / 904.3 Sqft

NET AREA (INTERNAL)  
Excludes walls and external features  
79.8 Sqm / 859.1 Sqft

EXTERNAL STRUCTURAL FEATURES  
Balconies, terraces, verandas etc.  
41.1 Sqm / 442.8 Sqft

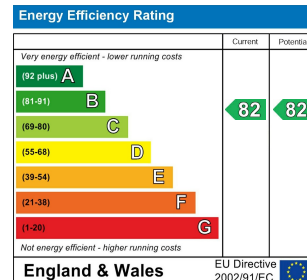
RESTRICTED HEAD HEIGHT  
Limited use area under 1.8m  
0.0 Sqm / 0.0 Sqft



Spec floor plans are produced in accordance with the Royal Institution of Chartered Surveyors' Property Measurement Standards. Plans and gardens are illustrative only and are excluded from all area calculations. Due to rounding, numbers may not add up precisely. All measurements shown for the individual room lengths and widths are the maximum points of measurements captured in the scan.

IPMS 3B RESIDENTIAL  
125.1 Sqm / 1347.1 Sqft  
IPMS 3C RESIDENTIAL  
121.0 Sqm / 1301.9 Sqft

SPEC ID:  
5d8d8f3130095db0a1e1274d3



## DIRECTIONS

## CONTACT

1-3 Old Town  
Clapham  
London  
SW4 0JT

E: [lettings@orlandoreid.co.uk](mailto:lettings@orlandoreid.co.uk)  
T: 020 7627 3197  
[www.orlandoreid.co.uk](http://www.orlandoreid.co.uk)

ORLANDO REID